

AQUIBOX/AQUIFROID

**HIGH QUALITY PORTABLE
ISOTHERME OR REFRIGERATED
ISO 5667-10 SAMPLER**



- **Low cost and scalable sampler**

Small and moderate weight, Aquibox / Aquifroid with bottle(s) is transported separately (2 parts).

- **2 dosing systems available: vacuum or peristaltic pump**

- **Low investment**

The sampling head is the same for all portable Aquinox samplers, it is easy to transform an Aquibox (isotherm) to a Aquifroid (refrigerated).

Our Aquinox portable or stationary samplers are using the same controller and the same familiar user-friendly interface. No need to change your habits from one model to another, or learning more about this controller and its communication possibilities.

Long battery life up to 600 samples with its internal battery

Aquibox / Aquifroid portable Samplers offer many possibilities in terms of bottles, from 1 x 6.4L to 24 x 1L

Aquifroid isolation and refrigeration characteristics are simply excellent.

CARACTERISTICS

Dosing system	
Dosing system	Vaccum pump (or peristaltic on request)
Sampling tube	Diameter : 12 mm Standard length: 5 meters Length : 5 meters (plus on request) Material : PVC reinforced with clear ballast brass or stainless steel at the end of tube
Volume precision ¹	± 1 ml
Detection system	Conductive fast response
Succion height	6 meters
Speed volume	0,5 m/s (to 5m height) ajustable
Sample volume	20 – 200 ml
Claning of the sample	Yes
Clearing blow (before sampling)	1 to 120 seconds
Clearing blow (after sampling)	1 to 120 seconds
Blow pressure	0,6 bars
Metering vessel ²	DURAN glass. No tools needed for mounting
Sample storage	
Bidons	Polyethylene or Duran glass
Controller	
Remote start on external contact	YES
Sampling from external contact (eg flowmeter)	Adjustable between 1 and 999 pulses
Starting late	1 min to infinite
Sample Time	1 min to 250 h
Intervals	1 min to 100 h
Number of programs	9 (simultaneous or chained)
Analog output	0 or 4 to 20 mA
Interface	RS232 or RS485 RTC Modem (wired) or GSM Modem
Remote control	option
Batteries	
Batteries	Built-in maintenance-free lead-acid battery
Autonomy	600 samples (Autonomy) ³ 1200 samplings ³ with external battery (option available in front of sampler head)
Norms	
Norms	CE certification in compliance with specifications
Cabinet	
Cabinet	Portable with handle
Material	
Material	Stainless steel AISI304 (1.4301)
Charger	
Charger	Internal
Protection	
Protection	IP 55 The sampler and the active cooler must be protected against heavy rain, for example with a tarpaulin.
Operating temperature	
Operating temperature	-20° à +60°C
Humidity	
Humidity	80 % at 30 °C / 50% at 40 °C
Weight (with batteries)	
Weight (with batteries)	17,5 kg (with batteries) - 5 kg without internal batteries
Dimensions H * W * D (mm)	
Dimensions H * W * D (mm)	430 * 415 * 290

1. Volumes must be distributed with fidelity and accuracy of at least 5% according ISO 5667-10

2. Sampler should be simple in design and easy to maintain, operate and clean according ISO 5667-10

3. New batteries, respecting charge and discharge cycle



		Bottle configuration	H x W x D	Weights	Power supply	Hourly consumption	
						Internal temperatures 5°C Externe 20°C	Internal temperatures 5°C Externe 32°C
ISOTHERMAL CONTAINERS		1 x 6,4 l. Polyethylene	354 x 460 x 370 mm	4,5 kg			
		12 x 1 l. Polyethylene					
		24 x 1 l. Polyethylene	310 x 566 x 350	7 kg			
COOLING UNITS		12 x 1 l. Polyethylene or 12 x 0,9 l. DURAN glass	430 x 692 x 398 mm	20 kg	110 / 240 V 50 Hz (1,3 / 0,7 A.) 12 Vcc (6 A.) 24 Vcc (3 A.)	Approximately 0,56 Amp/cc 0,03 Amp/ca	Approximately 0,71 Amp/cc 0,04 Amp/ca
		1 x 10,4 l. Polyethylene or 1 x 12 l. DURAN glass					
		24 x 1 l. Polyethylene or 24 x 0,9 l. DURAN glass	472 x 957 x 530 mm	32 kg		Approximately 0,75 Ah/h	Approximately 1,25 Ah/h

a) With removable handles
b) Excluding handles
All dimensions in mm

NEW

CARRYING CASE WITH EXTERNAL BATTERIES

FOR HEAD OF SAMPLERS AQUIBOX / AQUIFROID

ADVANTAGES

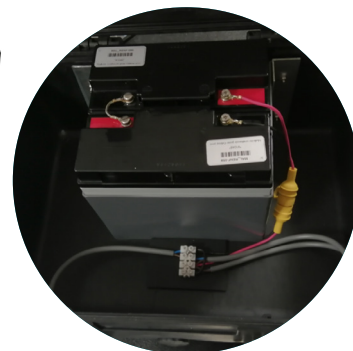


- 2 batteries 12V 17Ah with charger 220V
- Increase the autonomy of sampler
 - around 1200 samples with carrying case + internal batteries charged *
 - around 600 samples with carrying case + internal batteries discharged *
- Reinforced, adapted suitcase for the field
- Plug & play system thanks to front connector on the sampling heads
- Dimensions ext : 410 x 340 x 205 mm - Weight : 16 kg
- Material : Resin shell, ABS closures

- Easy to swap on site with another carrying case for long period campaigns leaving the sampler in place in the field.
- Possibility to remove the internal batteries to be lighter (- 5kg) and operate only with external batteries.



LOCKABLE CONNECTOR



* in standard sampling conditions and recent internal batteries